

## PERFORMANCE

### Processor

AMD Ryzen™ 5 PRO 6650U (6C / 12T, 2.9 / 4.5GHz, 3MB L2 / 16MB L3)

### Graphics

Integrated AMD Radeon™ 660M Graphics

### Chipset

AMD SoC Platform

### Memory

16GB Soldered LPDDR5-6400

### Memory Slots

Memory soldered to systemboard, no slots, dual-channel

### Max Memory

16GB soldered memory, not upgradable

### Storage

512GB SSD M.2 2280 PCIe® Gen 4x4 Value NVMe® Opal2

### Storage Support

One drive, up to 2TB M.2 2280 SSD

### Storage Slot

One M.2 2280 PCIe Gen 4x4 slot, supports M.2 2280 SSD

### Audio Chip

High Definition (HD) Audio, Realtek® ALC3287 codec

### Speakers

Stereo speakers, 2W x2, Dolby® Audio™

### Camera

IR & FHD 1080p with Privacy Shutter

### Microphone

2x, Array

### Battery

Integrated 52.5Wh

### Power Adapter

65W USB-C® (3-pin)

## DESIGN

### Display

16" WUXGA (1920x1200) Low Power IPS 400nits Anti-glare, 100% sRGB, Low Blue Light, TUV Eye Comfort

### Touchscreen

None

### Color Calibrator

ICC Template Color Calibration

### Keyboard

Backlit, German

### Case Color

Black

### Case Material

PC 50% GF + PC 20% CF (Top), PPS (Bottom)

### Dimensions (WxDxH)

361.98 x 255.5 x 20.5 mm (14.25 x 10.06 x 0.81 inches)

### Weight

Models	Weight
Model with black cover	Starting at 1.734 kg (3.82 lbs)
Model with grey cover	Starting at 1.779 kg (3.92 lbs)

## SOFTWARE

### Operating System

Windows® 11 DG Windows 10 Pro 64, German

### Bundled Software

None

## CONNECTIVITY

### Ethernet

Integrated 100/1000M, AMD Pro

### WLAN + Bluetooth®

Qualcomm® NFA725A Wi-Fi® 6E, 11ax, 2x2 + BT5.2

### WWAN

WWAN Upgradable to 4G

### SIM Card

None

### NFC

None

### Standard Ports

- 2x USB 3.2 Gen 1 (one Always On)
- 2x USB-C 3.2 Gen 2 (support data transfer, Power Delivery and DisplayPort™ 1.4)
- 1x HDMI®, up to 4K/60Hz
- 1x Ethernet (RJ-45)
- 1x Headphone / microphone combo jack (3.5mm)
- 1x Security keyhole

### Optional Ports (configured)

- 1x Smart card reader
- 1x Nano-SIM card slot (WWAN support models)

### Docking

Various docking solutions supported via USB-C. For more compatible docking solutions, please visit [Docking](#)

for [ThinkPad P16s Gen 1 \(AMD\)](#)

### Monitor Cable

None

## SECURITY & PRIVACY

### Smart Card Reader

Smart Card Reader

### Security Chip

Discrete TPM 2.0

### Fingerprint Reader

Integrated in Power Button

### Physical Locks

Kensington® Nano Security Slot, 2.5 x 6 mm

### Other Security

IR camera for Windows® Hello

## MANAGEABILITY

### System Management

AMD Pro Manageability

## SERVICE

### Base Warranty

3-year, Depot

### Included Upgrade

1Y Premier Support from 3Y Depot Windchill bundles (CPN) (5WS1B68729)

## ACCESSORIES

### Bundled Accessories

None

## CERTIFICATIONS

### Green Certifications

- EPEAT™ Gold
- ENERGY STAR® 8.0
- TCO Certified 9.0
- RoHS compliant

### Other Certifications

TÜV Rheinland® Eye Comfort Certification

### Mil-Spec Test

MIL-STD-810H military test passed

### ISV Certifications

Please visit [ISV certifications for Lenovo® Workstations](#)

## MODEL

**TopSeller** : Yes **Announce Date** : 2022-07-19

**EAN / UPC / JAN** : 0196801287334 **End of Support** : N/A

• Lenovo reserves the right to change specifications or other product information without notice.  
• Product image on this page is a sample, it may not match the real color of this model.  
• Battery life is an estimated maximum. Actual battery life may vary based on many factors, including screen brightness, active applications, features, power management settings, battery age and conditioning, and other customer preferences

## Premier Support - A direct 24x7x365 line to our most elite technicians.



Advanced technical support, 24x7x365, in more than 100 markets



Technical Account Managers for proactive relationship and escalation management



Comprehensive hardware & OEM software support



Priority on service delivery and repair parts



Single point of contact for simplified end-to-end case management



Lenovo Service Connect Portal for customized reporting and product support

## Accidental Damage Protection - Protection of your PC from the unexpected.

Experience shows that a significant portion of devices may be damaged (and not covered under warranty) in the first three years. Lenovo's Accidental Damage Protection service covers accidents beyond the system warranty such as drops, spills, bumps and even electrical surges. Make sure your new device has maximum protection, avoid unplanned costs and get peace of mind.

## Base Warranty - Included with the systems you purchase, default 1- or 3-year coverage window.

## Warranty Extensions & Upgrades - Service and protection that's right for your circumstances.

- Pick Up & Return Courier
- Onsite Support
- Technician Installed Customer
- Replaceable Unit Service
- International Warranty Upgrade

Lenovo may not offer the products, services or features discussed in this document in all regions. Lenovo may withdraw an offering at any time. Information is subject to change without notice. Consult your local representative for information on offerings available in your area. Lenovo reserves the right to change specifications or other product information without notice. Lenovo is not responsible for photographic or typographical errors. Lenovo provides this publication "as is" without warranty of any kind, either express or implied, including the implied warranties of merchantability or fitness for a particular purpose.

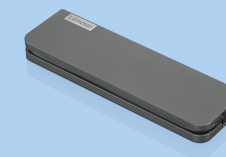
## Recommended Accessories



### ThinkPad USB-C Dock Gen 2

40AS0090US

- Lenovo understands that modern business depends on a wide variety of PC's and even brands to meet their business needs. To make this easier Lenovo USB-C dock is compatible with Lenovo notebooks as well as note...



### Lenovo USB-C Mini Dock\_US

40AU0065US

Expand Your Potential with An Universal Mini Dock; Lenovo understands that modern business depends on a wide variety of PC's and even brands to meet their business needs. To make this easier Lenovo USB-C Mini dock is ...

For a full list of accessories and services, please visit:  
<https://smartfind.Lenovo.com>

Lenovo

PSREF  
Product Specifications  
Reference