



The product images are for illustration purposes only. Actual product appearance, ports, keyboard layout, and accessories may vary by model.

- Intel Core Ultra 9 285H, 16C (6P + 8E + 2LPE) / 16T, Max Turbo up to 5.4GHz, 24MB Intel Smart Cache
- 64GB LPCAMM2 LPDDR5X-7467
- 1TB SSD M.2 2280 PCIe 5.0x4 Performance NVMe Opal 2.0
- NVIDIA RTX PRO 2000 Blackwell Generation 8GB GDDR7 Laptop GPU
- Windows 11 Pro, German
- Case color - Black
- CO2 Offset 0.5 ton (2nd Generation Carbon Offset Projects), 3Y Premier Support Plus for AIPC upgrade from 3Y Courier/Carry-in

**Premier Support** - A direct 24x7x365 line to our most elite technicians.

- Advanced technical support, 24x7x365, in more than 100 markets
- Comprehensive hardware & OEM software support
- Single point of contact for simplified end-to-end case management
- Technical Account Managers for proactive relationship and escalation management
- Priority on service delivery and repair parts
- Lenovo Service Connect Portal for customized reporting and product support

**Accidental Damage Protection** - Protection of your PC from the unexpected.

Experience shows that a significant portion of devices may be damaged (and not covered under warranty) in the first three years. Lenovo's Accidental Damage Protection service covers accidents beyond the system warranty such as drops, spills, bumps and even electrical surges. Make sure your new device has maximum protection, avoid unplanned costs and get peace of mind.

**Base Warranty** - Included with the systems you purchase, default 1- or 3-year coverage window.

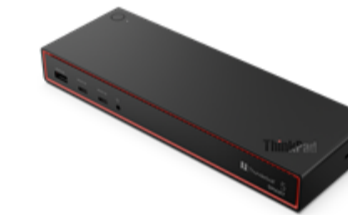
**Warranty Extensions & Upgrades** - Service and protection that's right for your circumstances.

- Pick Up & Return Courier
- Onsite Support
- Technician Installed Customer
- Replaceable Unit Service
- International Warranty Upgrade

**Recommended Accessories** Austria



**Lenovo Dual-Mode Wireless ANC Headset 6550 (USB-C, Teams)**  
4XD1S19778



**ThinkPad Thunderbolt 5 Smart Dock 7500 - EU/INA/VIE/ROK**  
40BA0265EU



**ThinkPad Bluetooth Presenter Mouse (Aura Edition)**  
4Y51T62792



**Lenovo USB 20Gbps USB-C to USB-C Cable 1.5m**  
4X91U92143



**Lenovo 16" Laptop Everyday Backpack B510**  
4X41U80414



**Lenovo 16" Clarity Privacy Filter**  
4XJ1U03940

>> [View More Accessories](#)

**PERFORMANCE****Processor**

Intel Core™ Ultra 9 285H, 16C (6P + 8E + 2LPE) / 16T, Max Turbo up to 5.4GHz, 24MB Intel® Smart Cache

**AI PC Category**

AI-Ready Workstations

**NPU**

Integrated Intel® AI Boost, up to 13 TOPS

**Graphics**

NVIDIA® RTX PRO 2000 Blackwell Generation 8GB GDDR7 Laptop GPU

**Chipset**

Intel® SoC Platform

**Memory**

64GB LPCAMM2 LPDDR5X-7467

**Memory Slots**

One LPCAMM2 connector, dual-channel

**Max Memory**

Up to 64GB (1x 64GB LPCAMM2), upgradable

**Storage**

1TB SSD M.2 2280 PCIe® 5.0x4 Performance NVMe® Opal 2.0

**Storage Slot**

Two M.2 2280 PCIe® 4.0 x4 slots

**Max Storage Support<sup>[1]</sup>**

Up to two M.2 2280 Gen 5 Performance SSD; up to 8TB, 4TB each

**RAID Preset**

None

**Card Reader**

SD Express 7.0 Card Reader

**Audio Chip**

SoundWire®, Cirrus Logic® CS42L43 codec

**Speakers**

Stereo speakers, 2W x2, Dolby Atmos®

**Microphone**

2x, Array

**Camera**

5.0MP + IR with Privacy Shutter and Computer Vision Human Presence Detection on ISP

**Battery**

90Wh

**Power Adapter**

140W USB-C® GaN (3-pin)

**DESIGN****Display**

16" WUXGA (1920x1200) IPS 500nits Anti-glare, 100% sRGB, 60Hz, Low Power, Eyesafe®, TÜV Low Blue Light

**Screen-to-Body Ratio**

- 90.9% (Tandem OLED models)
- 91.7% (IPS models)

**Color Calibration**

X-Rite® Factory Color Calibration

**Pen**

Pen Not Supported

**Keyboard**

Backlit, German

**Dimensions (WxDxH)<sup>[2]</sup>**

354.3 × 241.0 × 9.9 / 15.8 (front / rear), 20.6 (maximum) mm 13.95 x 9.49 x 0.39 / 0.62 (front / rear), 0.81 (maximum) inches

**Weight<sup>[3]</sup>**

Starting at 1.84 kg (4.06 lbs)

**Case Color**

Black

**Case Material**

Aluminium (Top), Aluminium (Bottom)

**SOFTWARE****Operating System**

Windows® 11 Pro, German

**Bundled Software**

Lenovo® AI Now + Intel® Connectivity Performance Suite

**CONNECTIVITY****WLAN + Bluetooth**

Intel® Wi-Fi® 7 BE201, 802.11be 2x2 + BT5.4, vPro®<sup>[4]</sup>

**WWAN**

WWAN Not Supported

**SIM Card**

No physical SIM card inbox

**Ethernet**

No Onboard Ethernet

**NFC**

No NFC

**Standard Ports**

- 1x USB-A (USB 10Gbps / USB 3.2 Gen 2), Always On
- 2x Thunderbolt™ 5, with USB PD 3.1 and DisplayPort™ 2.1, 140W input / 15W output
- 1x Thunderbolt™ 4, with DisplayPort™ 2.1 and USB PD 3.1, 140W input / 15W output
- 1x HDMI® 2.1, up to 8K/60Hz
- 1x Headphone / microphone combo jack (3.5mm)
- 1x SD Express 7.0 card reader
- 1x Kensington Nano Security Slot™

**Docking**

Various docking solutions supported via Thunderbolt™ or USB-C®. For more compatible docking solutions, please visit [Docking for ThinkPad® P1 Gen 8](#)

**SECURITY & PRIVACY****Security Chip**

Discrete TPM 2.0 Enabled

**Physical Locks**

Kensington Nano Security Slot™, 2.5 x 6 mm

**Smart Card Reader**

No Smart Card Reader

**Fingerprint Reader**

Touch Style, Match-on-Chip, Integrated in Power Button

**Other Security**

- Bottom cover tamper detection
- Camera privacy shutter
- Computer Vision-based User Presence Sensing on Image Signal Processor (ISP)
- IR camera for Windows® Hello (facial recognition)

**MANAGEABILITY****System Management**

Intel® vPro® Enterprise

**SERVICE****Base Warranty**

3-year, Courier or Carry-in with 1-year Battery

**Included Upgrade**

CO2 Offset 0.5 ton (2nd Generation Carbon Offset Projects), 3Y Premier Support Plus for AIPC upgrade from 3Y Courier/Carry-in

**ACCESSORIES****CERTIFICATIONS****ISV Certifications**

Please visit [ISV certifications for Lenovo® Workstations](#)

**Green Certifications**

- ENERGY STAR® 9.0
- EPEAT™ Gold Registered
- RoHS compliant
- TCO Certified, generation 10

**Mil-Spec Test**

MIL-STD-810H military test passed

**Other Certifications**

- Intel Evo™ Platform
- Eyesafe® Certified 2.0
- TÜV Rheinland® Low Blue Light

**MODEL**

**TopSeller** : Yes **EAN / UPC / JAN:** 0199275348143  
**Announce Date:** 2026-02-14 **End of Support** : 2032-04-25

- Please refer to the official [Lenovo store website](#) or contact a local Lenovo sales representative or authorized business partner for current inventory and purchase options.
- Lenovo reserves the right to change specifications without notice. To see more note information, please access the [web page](#).