

PERFORMANCE

Processor

Intel® Core™ i5-11500T (6C / 12T, 1.5 / 3.9GHz, 12MB)

Processor Sockets

1x FCLGA1200

Integrated Graphics

Intel UHD Graphics 750

Discrete Graphics

NVIDIA® T600 4GB

Chipset

Intel Q570 Chipset

Memory

1x 16GB SO-DIMM DDR4-3200 Non-ECC

Memory Slots

Two DDR4 SO-DIMM slots, dual-channel capable

Max Memory

Up to 64GB DDR4-3200

M.2 SSD Drive

512GB SSD M.2 2280 PCIe® 4.0 NVMe® Opal

Storage Support

Up to two drives, 2x M.2 SSD

- M.2 SSD up to 2TB each

Optical

None

Audio Chip

High Definition (HD) Audio, Realtek® ALC233VB codec

Power Supply

170W 89% Power Adapter

DESIGN

Keyboard

USB Traditional Keyboard, Black, German

Mouse

USB Calliope Mouse

Expansion Slots

One PCIe slot via specific riser card:
PCIe 3.0 x16 (negotiable link width x8) and low profile for discrete graphics card,
PCIe 3.0 x4 and low profile for ethernet adapter and Thunderbolt™ adapter

M.2 Slots

Up to 2x M.2 SSD on models with 11th Core processor:

- 1x M.2 2280 onboard slot, M.2 PCIe Gen 4
- 1x M.2 2280 /2242 onboard slot, M.2 PCIe Gen 4

Bays

No bays

Dust Filter

None

Toolless Chassis Screw

None

Mounting

None

Stand

None

Dimensions (WxDxH)

37 x 182.9 x 179 mm (1.5 x 7.2 x 7.0 inches)

Weight

1.4 kg (3 lbs, maximum configuration)

CONNECTIVITY

Onboard Ethernet

Intel I219-LM, 1x GbE RJ-45

Optional Ethernet

None

WLAN + Bluetooth®

None

Front Ports

- 1x USB 3.2 Gen 2 (Always On and fast charge)
- 1x USB-C® 3.2 Gen 2
- 1x headphone / microphone combo jack (3.5mm)

Rear Ports

- 2x USB 3.2 Gen 1 (one supports Smart Power On)
- 2x USB 3.2 Gen 2
- 1x HDMI®
- 1x DisplayPort™
- 1x Ethernet (RJ-45)

Optional Rear Ports (configured)

None

SECURITY & PRIVACY

Security Chip

Discrete TPM 2.0, TCG certified

Physical Locks

Kensington® Security Slot, 3 x 7 mm

Chassis Intrusion Switch

Chassis Intrusion Switch

MANAGEABILITY

System Management

Intel vPro with AMT 14

Diagnostic

Lenovo® UEFI Bootable Diagnostics

SERVICE

Base Warranty

3-year, Onsite

Included Upgrade

None

CERTIFICATIONS

Case Color

Black

Green Certifications

- EPEAT™ Gold
- ENERGY STAR® 8.0
- RoHS compliant

ISV Certifications

Please visit www.thinkworkstations.com/isv-certifications/

Mil-Spec Test

MIL-STD-810G military test passed

SOFTWARE

Operating System

Windows® 10 Pro 64, German

Bundled Software

None

MODEL

TopSeller : Yes

Announce Date : 2021-07-06

EAN / UPC / JAN : 0195890712925

End of Support : 2029-06-25



Premier Support - A direct 24x7x365 line to our most elite technicians.



Advanced technical support, 24x7x365, in more than 100 markets



Technical Account Managers for proactive relationship and escalation management



Comprehensive hardware & OEM software support



Priority on service delivery and repair parts



Single point of contact for simplified end-to-end case management



Lenovo Service Connect Portal for customized reporting and product support

Accidental Damage Protection - Protection of your PC from the unexpected.

Experience shows that a significant portion of devices may be damaged (and not covered under warranty) in the first three years. Lenovo's Accidental Damage Protection service covers accidents beyond the system warranty such as drops, spills, bumps and even electrical surges. Make sure your new device has maximum protection, avoid unplanned costs and get peace of mind.

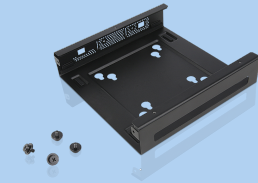
Base Warranty - Included with the systems you purchase, default 1- or 3-year coverage window.

Warranty Extensions & Upgrades - Service and protection that's right for your circumstances.

- Pick Up & Return Courier
- Onsite Support
- Technician Installed Customer
- Replaceable Unit Service
- International Warranty Upgrade

Lenovo may not offer the products, services or features discussed in this document in all regions. Lenovo may withdraw an offering at any time. Information is subject to change without notice. Consult your local representative for information on offerings available in your area. Lenovo reserves the right to change specifications or other product information without notice. Lenovo is not responsible for photographic or typographical errors. Lenovo provides this publication "as is" without warranty of any kind, either express or implied, including the implied warranties of merchantability or fitness for a particular purpose.

Recommended Accessories



ThinkCentre Tiny VESA Mount II

4XFON03161

The ThinkCentre Tiny VESA Mount II is a unique design specific to house the Tiny PC while featuring the universal VESA mount configuration. The VESA standard enables this mount to attach to anything that is VESA comp...

Recommended Services

BEST	5Y Lenovo Support (Premier Support + Keep Your Drive + International Upg) (5PS0N73174)
BETTER	4Y Lenovo Support (Premier Support + Keep Your Drive + International Upg) (5PS0N73243)
GOOD	3Y Premier Support Upgrade from 3Y Onsite (5WS0U26646)

For a full list of accessories and services, please visit:
<https://smartfind.Lenovo.com>



PSREF
Product Specifications
Reference