

PERFORMANCE

Processor

Intel® Core™ i7-12700T, 12C (8P + 4E) / 20T, P-core 1.4 / 4.6GHz, E-core 1.0 / 3.4GHz, 25MB

Processor Sockets

1x FCLGA1700

Integrated Graphics

Intel UHD Graphics 770

Discrete Graphics

NVIDIA® T1000 8GB

Chipset

Intel Q670 Chipset

Memory

1x 16GB SO-DIMM DDR5-4800 non-ECC

Memory Slots

Two DDR5 SO-DIMM slots, dual-channel capable

Max Memory

Up to 64GB DDR5-4800

M.2 SSD Drive

1TB SSD M.2 2280 PCIe® Gen 4x4 Performance NVMe® Opal

Storage Support

Up to two drives, 2x M.2 SSD, up to 2TB each

Optical

None

Audio Chip

High Definition (HD) Audio, Realtek® ALC256VB codec

Power Supply

230W 89% Power Adapter

DESIGN

Keyboard

USB Traditional Keyboard, Black, German

Mouse

USB Calliope Mouse, Black

Expansion Slots

One PCIe 4.0 x8, low-profile

M.2 Slots

- Two M.2 PCIe Gen 4x4 slots (for SSD)
- One M.2 slot (for WLAN)

Bays

No bays

Dust Filter

None

Toolless Chassis Screw

None

Mounting

None

Stand

None

Weight

1.4 kg (3 lbs, maximum configuration)

CONNECTIVITY

Onboard Ethernet

Intel I219-LM, 1x GbE RJ-45

Optional Ethernet

None

WLAN + Bluetooth®

Intel AX201 11ax, 2x2 + BT5.2

Front Ports

- 1x USB 3.2 Gen 2
- 1x USB 3.2 Gen 2 (Always On and 5V@2.1A charging)
- 1x USB-C® 3.2 Gen 2
- 1x headphone / microphone combo jack (3.5mm)

Rear Ports

- 2x USB 3.2 Gen 1 (one supports Smart Power On)
- 2x USB 3.2 Gen 2
- 1x HDMI® 2.1 TMDS
- 1x DisplayPort™ 1.4
- 1x Ethernet (RJ-45)

Optional Rear Ports (configured)

None

SECURITY & PRIVACY

Security Chip

Discrete TPM 2.0, TCG certified

Physical Locks

Kensington® Security Slot, 3 x 7 mm

Chassis Intrusion Switch

Chassis Intrusion Switch

MANAGEABILITY

System Management

Non-vPro

SERVICE

Base Warranty

3-year, Onsite

Included Upgrade

1Y Premier Support from 3Y Onsite Windchill bundles (CPN) (5WS1B68726)

CERTIFICATIONS

Case Color

Black

Green Certifications

- EPEAT™ Gold
- ENERGY STAR® 8.0
- ErP Lot 3
- TCO Certified 9.0
- RoHS compliant

ISV Certifications

Please visit [ISV certifications for Lenovo® Workstations](#)

Mil-Spec Test

MIL-STD-810H military test passed

SOFTWARE

Operating System

Windows® 11 DG Windows 10 Pro 64, German

Bundled Software

None

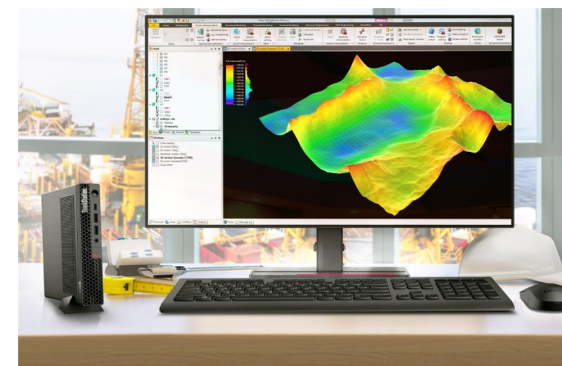
MODEL

TopSeller : Yes

Announce Date : 2022-06-21

EAN / UPC / JAN : 0196800870452

End of Support : 2030-04-18



Premier Support - A direct 24x7x365 line to our most elite technicians.

Advanced technical support, 24x7x365, in more than 100 markets

Technical Account Managers for proactive relationship and escalation management

Comprehensive hardware & OEM software support

Priority on service delivery and repair parts

Single point of contact for simplified end-to-end case management

Lenovo Service Connect Portal for customized reporting and product support

Accidental Damage Protection - Protection of your PC from the unexpected.

Experience shows that a significant portion of devices may be damaged (and not covered under warranty) in the first three years. Lenovo's Accidental Damage Protection service covers accidents beyond the system warranty such as drops, spills, bumps and even electrical surges. Make sure your new device has maximum protection, avoid unplanned costs and get peace of mind.

Base Warranty - Included with the systems you purchase, default 1- or 3-year coverage window.

Warranty Extensions & Upgrades - Service and protection that's right for your circumstances.

- Pick Up & Return Courier
- Onsite Support
- Technician Installed Customer
- Replaceable Unit Service
- International Warranty Upgrade

Lenovo may not offer the products, services or features discussed in this document in all regions. Lenovo may withdraw an offering at any time. Information is subject to change without notice. Consult your local representative for information on offerings available in your area. Lenovo reserves the right to change specifications or other product information without notice. Lenovo is not responsible for photographic or typographical errors. Lenovo provides this publication "as is" without warranty of any kind, either express or implied, including the implied warranties of merchantability or fitness for a particular purpose.

Recommended Accessories

ThinkCentre Tiny VESA Mount II

4XFON03161

The ThinkCentre Tiny VESA Mount II is a unique design specific to house the Tiny PC while featuring the universal VESA mount configuration. The VESA standard enables this mount to attach to anything that is VESA comp...

Recommended Services

BEST	5Y Lenovo Protect (Premier Support + ADP + KYD + International Upg) (5PS1D67032)
BETTER	5Y Lenovo Support (Premier Support + KYD + International Upg) (5PS1D67028)
GOOD	4Y Lenovo Support (Premier Support + KYD + International Upg) (5PS1D67027)

For a full list of accessories and services, please visit:
<https://smartfind.Lenovo.com>

PSREF

Product Specifications
Reference